



LUXE ATELIER

MILANO

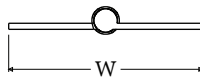
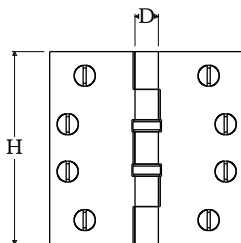
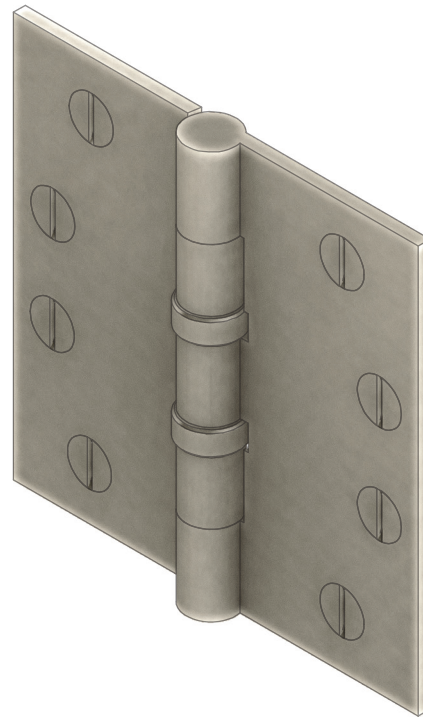


Cerniera a Libro Serie 609 (RH/LH)
609 Series Paumelle Hinge (RH/LH)

Dimensioni
Dimensions

	H	W	D
XS	3.0	3.0	0.625
S	3.5	3.5	0.625
M	4.0	4.0	0.625
L	4.5	4.5	0.625
XL	5.0	5.0	0.625

Dimensioni in pollici
Dimensions given in inches



Ghiera con cuscinetti a sfera, perno in acciaio e viti legno in finitura coordinata.

Disponibile in tutte le finiture standard.

Dimensioni e finiture su misura disponibili su richiesta.

Stainless steel pin, ball bearings and wood screws in matching finish.

Additional sizes available by special order. Available in standard and custom finishes.